

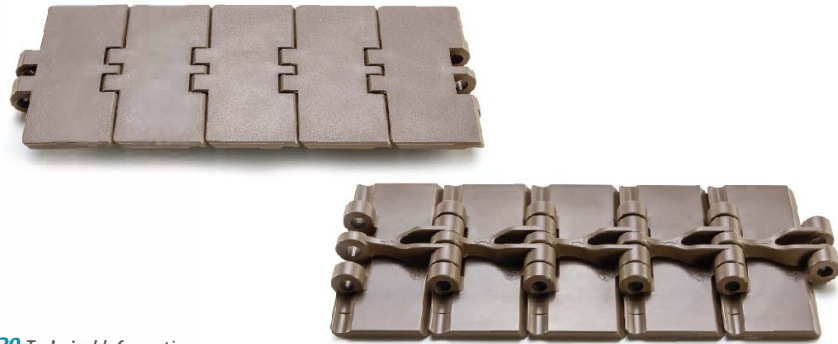


Modutech Plastic Chains

Chain Brochure

MD 820 Chain Series

Straight Running-Single Hinge Chains

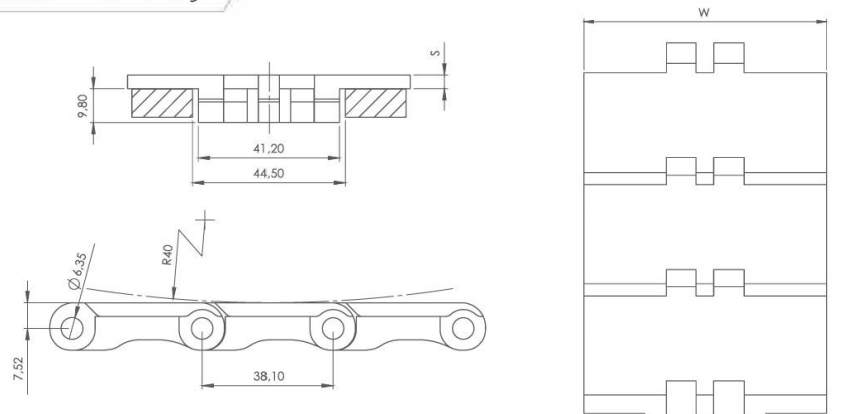


MD 820 Technical Information

MD 820 SERIES STRAIGHT RUNNING - SINGLE HINGE CHAINS						
PRODUCT CODE	WIDTH (W)		PLATE THICKNESS (S)	TENSILE STRENGTH		WEIGHT
	mm	inch		Kg/m	N/m	
MD 820-K325-LF	82,5	3,25	4	140	1400	0,84
MD 820-K400LF	101,6	4,00	4	140	1400	0,95
MD 820-K450LF	114,3	4,50	4	140	1400	1,05
MD 820-K600LF	152,4	6,00	4,8	140	1400	1,30
MD 820-K750-LF	190,5	7,50	4,8	140	1400	1,55

- * Self-lubricating low friction acetal resin, brown-coloured.
- * Pins in special chrome-nickel 304 stainless steel
- * Standard packing lengths = 80 pitches = 3,048 m

MD 820 Technical Drawings



MD 821 Chain Series

Straight Running Double Hinge Chains

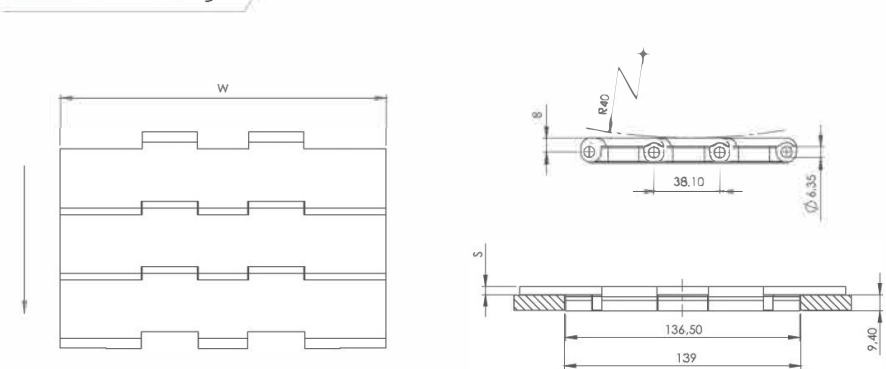


MD 821 Technical Information

MD 821 SERIES STRAIGHT RUNNING - DOUBLE HINGE CHAINS						
PRODUCT CODE	WIDTH (W)		PLATE THICKNESS (S)	TENSILE STRENGTH		WEIGHT
	mm	inch		Kg/m	N/m	
MD 821-K750-LF	190,5	7,50	4,8	270	2700	2,70
MD 821-K1000LF	254,0	10,00	4,8	270	2700	3,10
MD 821-K1200LF	304,8	12,00	4,8	270	2700	3,40

- * Self-lubricating low friction acetal resin, brown-coloured.
- * Pins in special chrome-nickel 304 stainless steel
- * Standard packing lengths = 80 pitches = 3,048 m

MD 821 Technical Drawings



MD 880-879 Chain Series

Standard Radius Sideflexing Chains

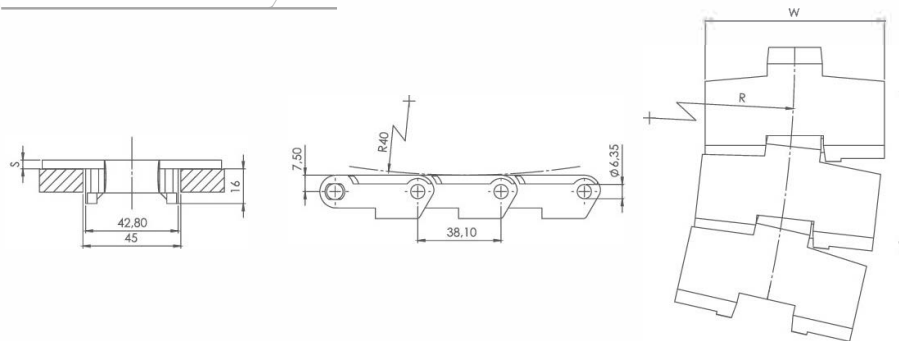


MD 880-879 Technical Information

MD 880-879 SERIES STANDARD RADIUS SIDEFLEXING CHAINS							
PRODUCT CODE	WIDTH (W)		PLATE THICKNESS (S)	RADIUS (R)	TENSILE STRENGTH		WEIGHT
	mm	inch			Kg/m	N/m	
MD 880-K325-LF	82,5	3,25	4	400	200	2000	0,90
MD 880-K400-LF	101,6	4,00	4	400	200	2000	1,00
MD 880-K450-LF	114,3	4,50	4	400	200	2000	1,10
MD 879-K600-LF	152,4	6,00	4,8	400	220	2200	1,30
MD 879-K750-LF	190,5	7,50	4,8	400	220	2200	1,50

- * Self-lubricating low friction acetal resin, brown-coloured.
- * Pins in special chrome-nickel 304 stainless steel
- * Standard packing lengths = 80 pitches = 3,048 m

MD 880-879 Technical Drawings



MD 880-879 TAB Chain Series

Standard Radius Sideflexing Chains

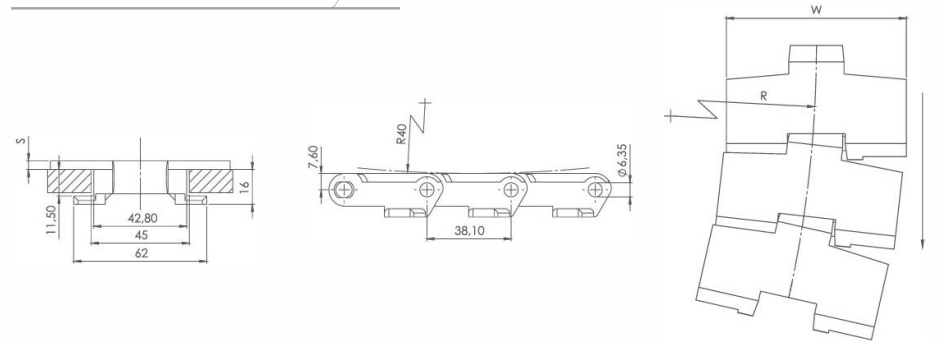


MD 880-879 TAB Technical Information

MD 880-879 TAB SERIES STANDARD RADIUS SIDEFLEXING CHAINS							
PRODUCT CODE	WIDTH (W)		PLATE THICKNESS (S)	RADIUS (R)	TENSILE STRENGTH		WEIGHT
	mm	inch			Kg/m	N/m	
MD 880 TAB-K325LF	82,5	3,25	4	400	200	2000	0,95
MD 880 TAB-K400-LF	101,6	4,00	4	400	200	2000	1,05
MD 880 TAB-K450-LF	114,3	4,50	4	400	200	2000	1,15
MD 879 TAB-K600-LF	152,4	6,00	4,8	400	220	2200	1,35
MD 879 TAB-K750-LF	190,5	7,50	4,8	400	220	2200	1,55

- * Self-lubricating low friction acetal resin, brown-coloured.
- * Pins in special chrome-nickel 304 stainless steel
- * Standard packing lengths = 80 pitches = 3,048 m

MD 880-879 TAB Technical Drawings



MD 1701 R / MD 1701 TAB R Chain Series

Multiflex Chains

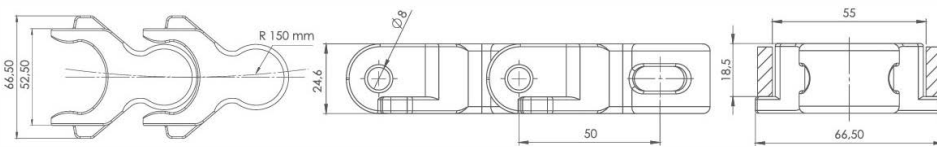


MD 1701 R / MD 1701 TAB R Technical Information

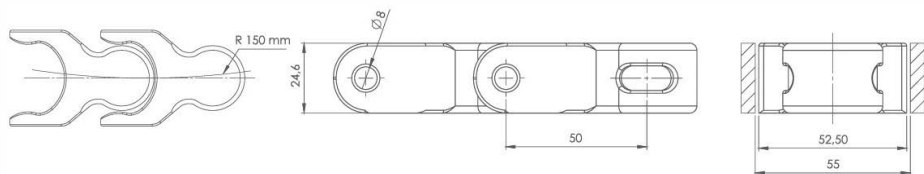
MULTIFLEX CHAINS						
PRODUCT CODE	PITCH	WIDTH (W)		RADIUS (R)	TENSILE STRENGTH	WEIGHT
		mm	inch			
MD 1701 R	50	52,5	2,05	150	255	1,58
MD 1701 TAB R	50	52,5	2,05	150	255	1,65

- * Self-lubricating low friction acetal resin, white-coloured
- * Pins in special chrome-nickel 304 stainless steel
- * Standard packing lengths = 122 pitches = 6,10 m

MD 1701 TAB R Technical Drawings



MD 1701 R Technical Drawings



MD 600 S / MD 600 TAB S Chain Series

Plastic Case Conveyor Chains

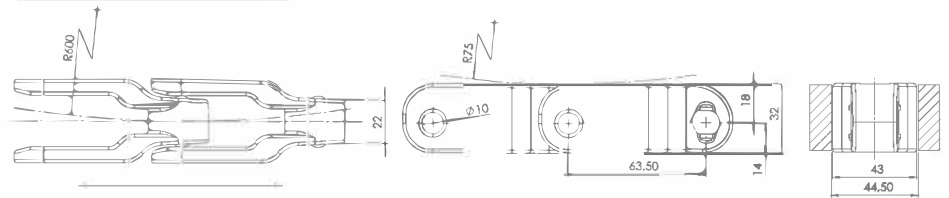


MD 600 S / MD 600 TAB S Technical Information

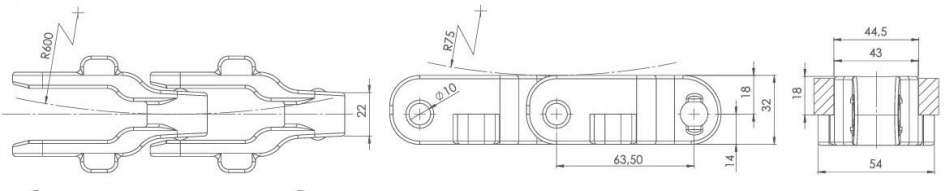
PLASTIC CASE CONVEYOR CHAINS					
PRODUCT CODE	PITCH	WIDTH (W)		TENSILE STRENGTH	WEIGHT
		mm	inch		
MD 600 S	63,5	43	1,70	400	1,55
MD 600 TAB S	63,5	43	1,70	400	1,65

- * Self-lubricating low friction acetal resin, white-coloured
- * Pins in special chrome-nickel 304 stainless steel
- * Standard packing lengths = 96 pitches = 6,096 m

MD 600 S Technical Drawings



MD 600 TAB S Technical Drawings



Flexi Chain Series



Flexi Chain Series Technical Information

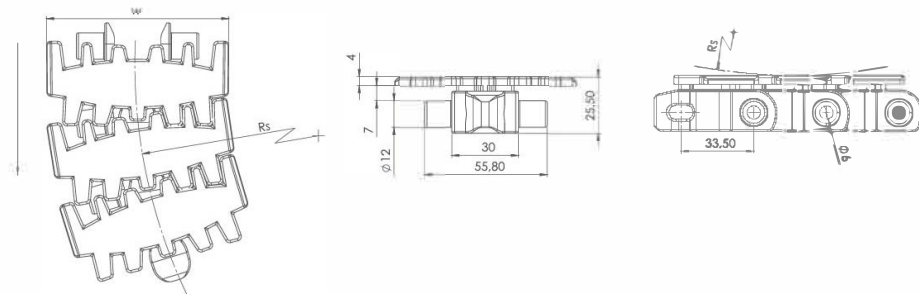
FLEXI CHAIN SERIES							
PRODUCT CODE	WIDTH (W)		PLATE THICKNESS	SIDEFLEX RADIUS (RS)	TENSILE STRENGTH		WEIGHT
	mm	inch			Kg/m	N/m	
FLEXI-K325-LF	82,5	3,25	4	140	110	1100	1,25
FLEXI-K450-LF	114,3	4,50	4	160	110	1100	1,55

* Self-lubricating low friction acetal resin, white-coloured

* Pins in special chromenickel 304 stainless steel

* Standard packing lengths = 91 pitches = 3.048 m

Flexi Chain Series Technical Drawings



Sprockets

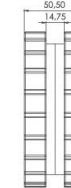


MD 820 Sprockets Technical Drawings

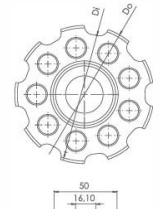


Classic Sprocket Series MD820					
Product Code	Number of Teeth	D ₁ (mm)	D ₂ (mm)	Round Bore (Ø)	Square Bore
MD 820	21	128	114	25	30
MD 820	25	152	138	25	30

* Special sprockets and hub size are being manufactured on your request.



MD 880 Sprockets Technical Drawings

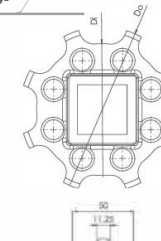
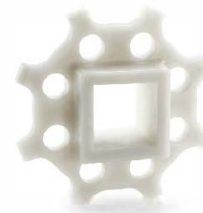


Classic Sprocket Series MD880					
Product Code	Number of Teeth	D ₁ (mm)	D ₂ (mm)	Round Bore (Ø)	Square Bore
MD 880	11	135	121	25	30
MD 880	11	135	121	25	30

* Special sprockets and hub size are being manufactured on your request.



MD 1701 R Sprockets Technical Drawings

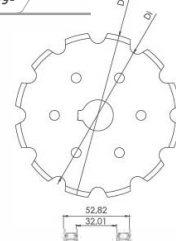


Classic Sprockets Series MD1701					
Product Code	Number of Teeth	D ₁ (mm)	D ₂ (mm)	Round Bore (Ø)	Square Bore
MD 1701 R	8	132	107	25	30
MD 1701 R	10	166	107	25	30
MD 1701 R	10	166	107	25	40 x 40

* Special sprockets and hub size are being manufactured on your request.



Flexi Chains Sprocket Technical Drawings

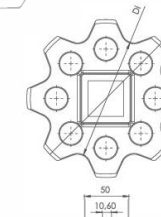


Classic Sprockets Series Flexi Chains					
Product Code	Number of Teeth	D ₁ (mm)	D ₂ (mm)	Round Bore (Ø)	Square Bore
FLEXI CHAIN	12	133	115	25	30
FLEXI CHAIN	12	133	115	25	40 x 40

* Special sprockets and hub size are being manufactured on your request.



MD 600 S Sprockets Technical Drawings



Classic Sprockets Series MD600					
Product Code	Number of Teeth	D ₁ (mm)	D ₂ (mm)	Round Bore (Ø)	Square Bore
MD 600	10	177	138	25	30
MD 600	10	221	176	25	30
MD 600	10	221	176	25	40 x 40

* Special sprockets and hub size are being manufactured on your request.

